

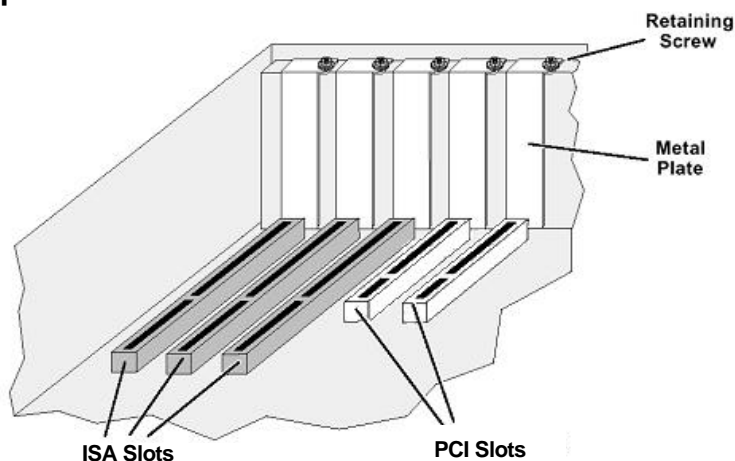
Dialogic Voice Board & Driver Installation

The following steps are for installing the following Dialogic Voice Board-Models: D/4PCI, D/41JCT-LS, D/120JCT-LS, D/240PCI-T1, and other PCI boards. These steps also apply to the following Dialogic ISA Voice Board Models: D/160SC-LS, D/240SC-T1, D480SC-2T1.

If you have any of these older Dialogic 2 or 4 telephone line ISA slot models: **Proline/2V, D/21D, D/41D, D/41ESC, Dialog/4, Proline/2V, D/21D, D/41D, or D/41H**, the steps for installing the Dialogic System Release (drivers) is the same, but you have to manually configure the card.

When unpacking the Dialogic board, please use caution when handling the board as its high degree of electronic integration makes it susceptible to damage by static discharge.

Step 1.



This illustration shows **ISA & PCI** slots. **ISA** slots are the longer of the two types and colored black. **PCI** slots are shorter and normally colored white, though they can be different colors such as purple on some motherboards. Insertion of the voice board will be the same for either type of slot.

- a) Prepare a static-safe work area prior to handling the voice board.
- b) Switch off the computer, and disconnect the computer's power cords from electrical outlets.

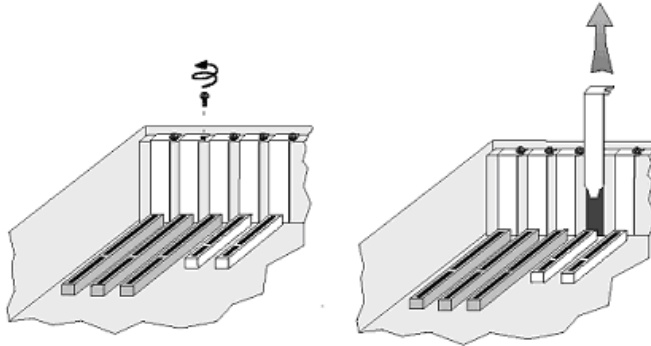


WARNING:

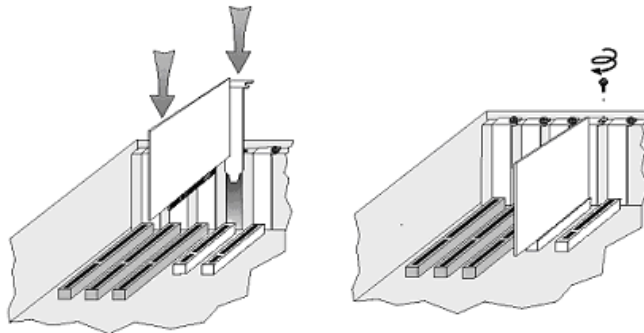
To avoid electric shock, be sure to switch off power to the computer and unplug all power cords before opening the computer case.

- c) Remove the computer cover to expose the ISA or PCI bus slots as shown in the picture above.

- d) Ground yourself to discharge any static electricity by touching the bare metal portion of your computer case, or connect an anti-static wrist strap to a bare metal portion of the computer case and slip it on your wrist.
- e) Select an empty, ISA or PCI expansion bus slot, and remove the corresponding retaining screw and metal plate, as shown below.



- f) Insert the voice board edge connector into the bus slot and press firmly until the board is securely seated in the slot. Then, replace and tighten the retaining screw.



- g) Repeat steps e and f for each voice board you are installing.

Note: With multiple board systems, be sure the dials on each board are set correctly. The first board is set to 0, second board is set to 1, third board is set to 2, etc.

Replace the computer cover when finished, and then reconnect the power cords.

Step 2. Restart the computer after the boards have been installed.

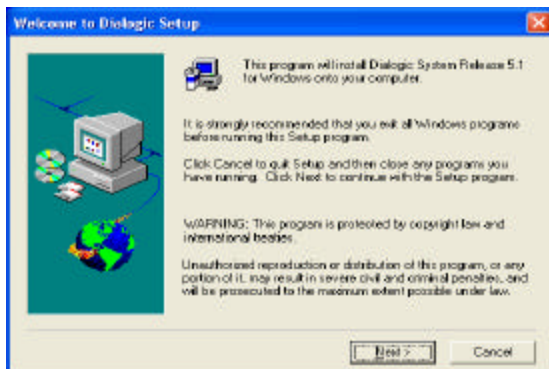
Step 3. If you are installing a PCI board, Windows will detect new hardware; click cancel, and follow the Instructions on step 4 to keep the “Add New Hardware Wizard” from coming up each time the computer is started.

- Step 4.** To disable the PCI Bridge Device:
 Right click on "My Computer" on your desktop
 Click on properties.
 Click on the hardware tab, click on the "Device Manager" button.
 Right click on the "PCI Bridge Device" (it will be marked with a yellow question mark). Next, click on the option to "Disable". This will not affect the way your voice board(s) will work.
- Step 5.** Insert your “**Dialogic Voice Board Drivers**” CD into your CD ROM drive, as shown in *Illustration 1*; follow the steps on the following pages to install Dialogic Driver software.



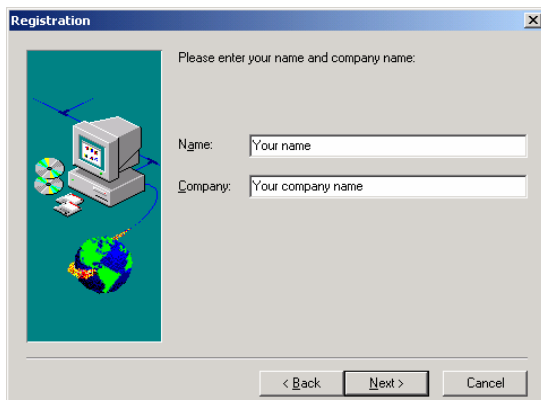
Illustration 1

The installation program should automatically start. If it does not, click on **Start** in your computer’s task bar, then click on **Run**. Next, type “**D:\setup.exe**” without the quotes and press <ENTER> (If your CD-Rom’s drive letter is not D, then substitute the appropriate drive letter).



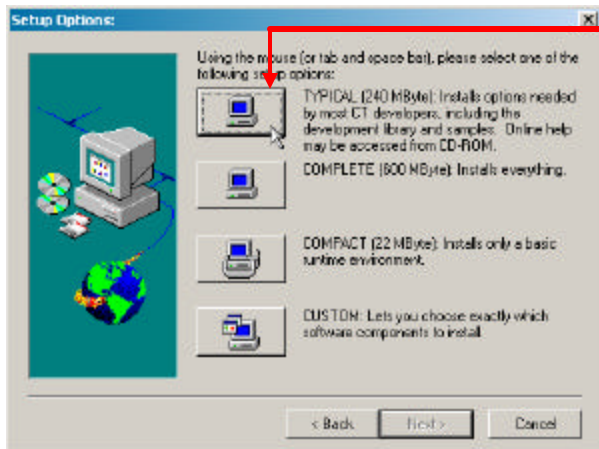
You will see the opening screen of the Dialogic Installation. Click “Next” to proceed.

Illustration 2



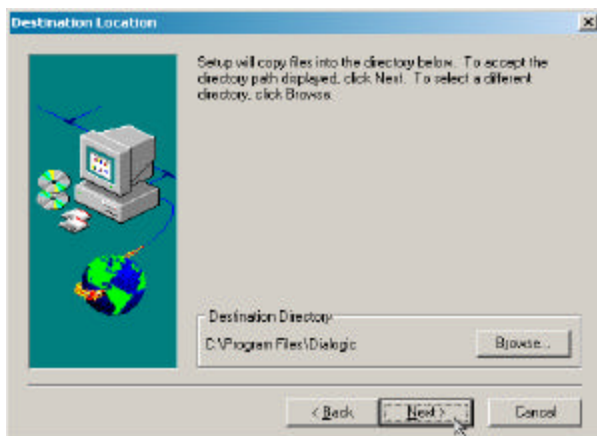
Next, fill in the information requested, Name and Company Name. Even if this isn’t for a business you will have to put something in the Company field, then click “Next” to continue with the installation.

Illustration 3



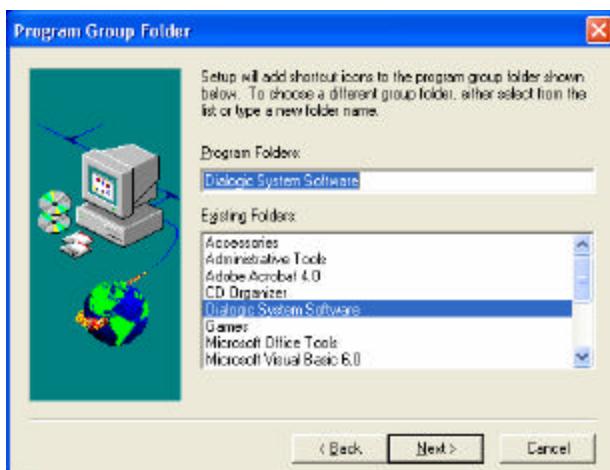
Next, select the type of driver installation you want. Click on the TYPICAL option as shown in **Illustration 4**.

Illustration 4



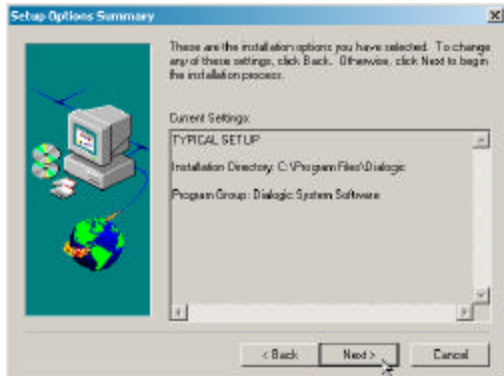
The program will now ask you to select the location on your hard drive where the Dialogic Drivers will be stored. Accept the default by clicking on the “Next” button.

Illustration 5



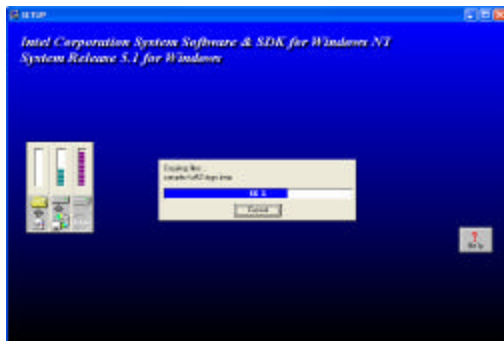
You will now be asked in which folder you want the shortcuts to the Dialogic Software to be stored. Accept the defaults by clicking on the “Next” button.

Illustration 6



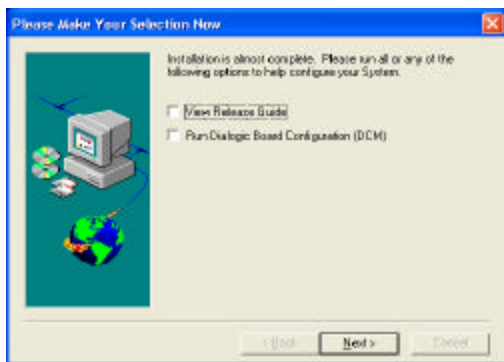
You will now see a summary of the options you have selected. To accept the settings, click “Next” as shown in **Illustration 7**.

Illustration 7



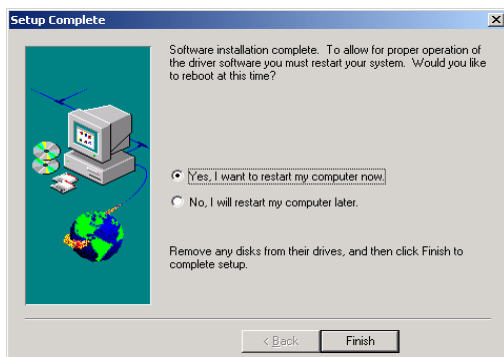
During the installation process, you will see a screen much like the one shown in **Illustration 8**. Wait for the installation to complete.

Illustration 8



When the installation is almost complete, you will be asked a few additional questions. Simply **UNCHECK** all the options as shown in **Illustration 9** by clicking on the check mark boxes next to the options that are checked, then click “Next” to continue with the installation.

Illustration 9



You will now be asked if you want to restart your computer. Select “Yes”, then click on “Finish”, as shown in **Illustration 10**. Your computer will save its current settings, then reboot after a few moments.

Illustration 10

Step 6. After restarting, click on Start> Programs> Dialogic System Software>Dialogic Configuration Manager as shown below:

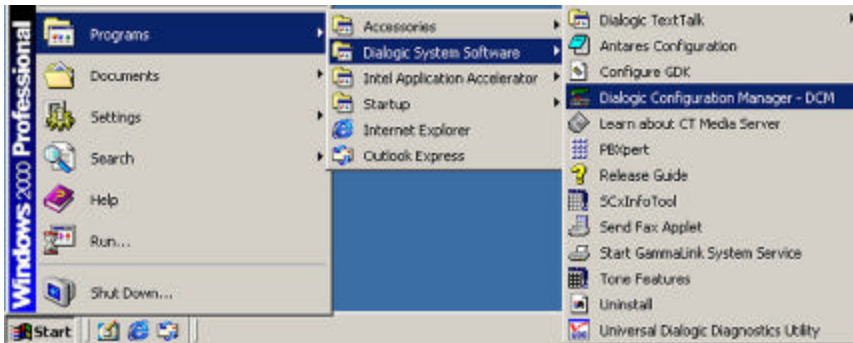
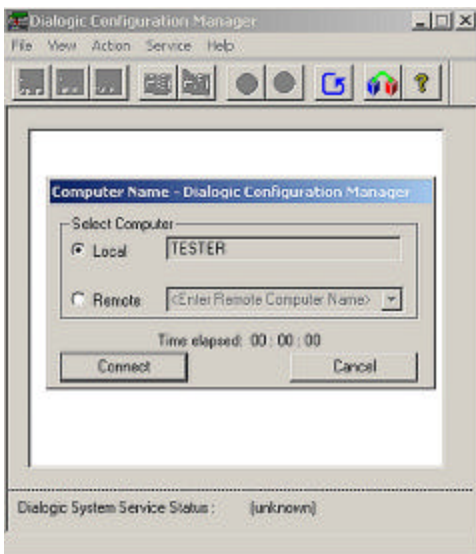
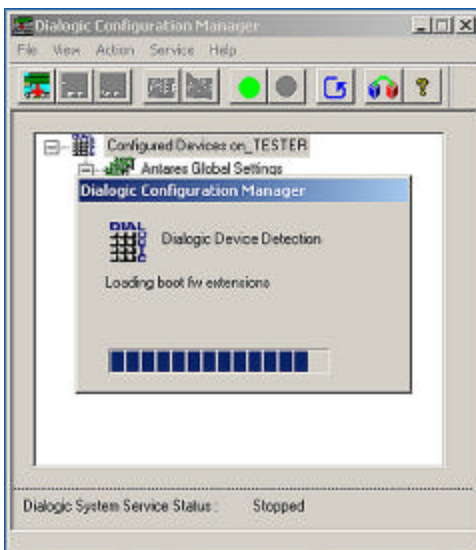


Illustration 11



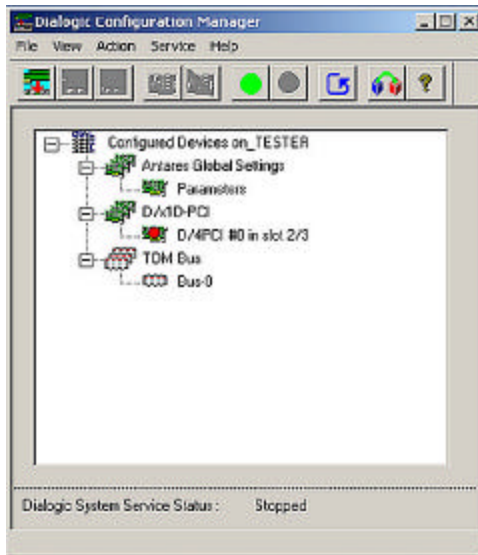
This will open the Dialogic Configuration Manager (DCM). The first time you open the DCM you should see a screen much like this one. Click Connect.

Illustration 12



After clicking the Connect button, the software will go through a detection process for up to a minute.

Illustration 13

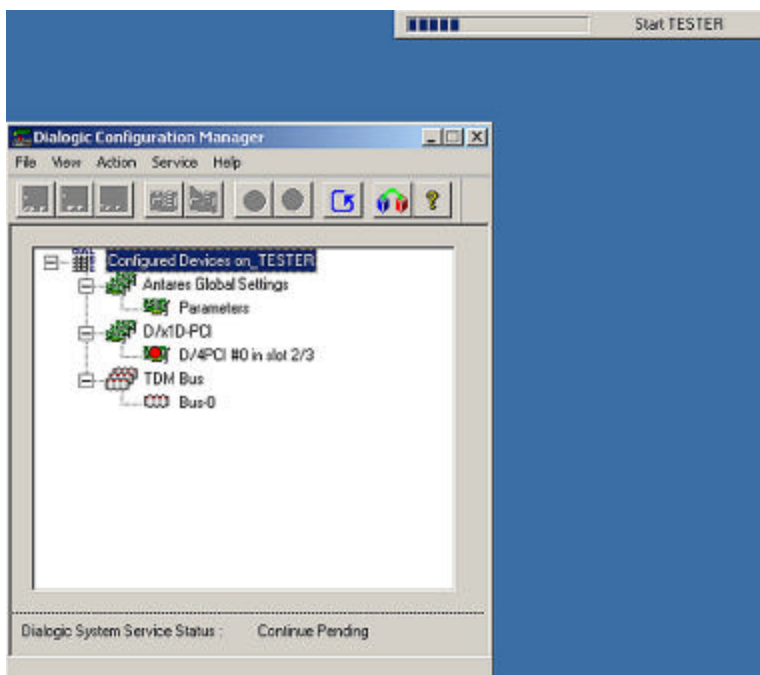


You should see your voice board(s) listed in the white area in the center of the DCM. (See the troubleshooting section below if you do not see your boards.)

NOTE: If you have the older ISA cards such as D/41D or Dialog/4 the cards will not be automatically detected, you will have to manually add and configure the cards.

Illustration 14

Step 7. Click on the green light on the row of buttons at the top of this window. Your voice board should start within approximately 30 seconds.



While the Dialogic board is starting, you will see a progress bar in the upper right corner of your screen as shown in **Illustration 15**. When the board is started, the red light to the left of the board will turn green, as shown in **Illustration 16**.

Illustration 15

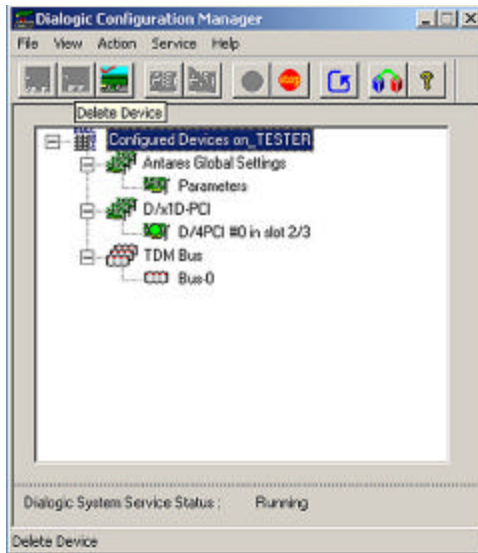
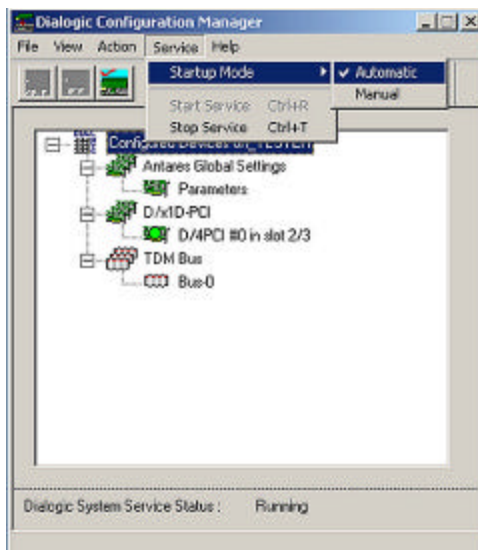


Illustration 16

**Step 8.**

After the voice boards have started, you should set them to start automatically. To do this, click on Service at the top of the Window, then click on Startup Mode and select Automatic as shown in **Illustration 17**. This will force the voice board drivers to start automatically each time your computer is started.

Illustration 17

Step 9. Finally, exit out of the DCM by clicking the **X** in the upper right corner of the window.

TROUBLESHOOTING

1. Turn off the “Plug and Play (PNP)” feature in the BIOS and then go back to the DCM. If you see the board at that point, start from step 6 above to finish setup.
2. If you have a BIOS that has no PNP option, contact your computer motherboard manufacturer for a possible BIOS update or utility.

If you need assistance with your computer’s hardware, please contact your computer vendor or technician.